

The River Murray

Together



Explore the River Murray data website: <https://riverdata.mdba.gov.au/system-view>

- What does the diagram represent?
- What kind of information does it provide?
- How might it be used?

Geographical Inquiry

Record your answers on your worksheet: 'Geographical Inquiry into the River Murray'

In small groups

1 From the website, choose one site that has data available (not a lock or weir). Look it up on a map.

2 Choose one of the following river properties that your site has data for:

- water level
- temperature
- salinity (salt concentration, measured via electrical conductivity)

↪ *Not all sites will have data available for all properties!*

3 Look at how the line graph shows variation - increases and decreases. Brainstorm 3-4 specific questions you have about this graph and the information it is representing.

If you're having trouble, here are some example questions:

- why do levels spike/dip sharply in one part of the graph?
- can we see human impact represented in this graph?
- does this graph show any natural hazards?

5 Starting with the suggested resources, use the internet to research and develop an answer to your question. You may need to research the geographical context of your site. When you're ready, answer your question in a few sentences.

4 Pick your best question to be the basis of your inquiry. Check it with your teacher before moving on.

6 Choose two of the following tasks and research your answer:

- A. Explain the dangers if the levels of your chosen property get too high or low. Use specific examples.
- B. Explain the effects of changes in this property on local First Nations people and the way they practise culture.
- C. Explain how changes in this property may affect the liveability of the areas around your chosen site.
- D. Devise one strategy to help manage this aspect of the river's health. Explain how it will help and how you can get the support of the local community.

7 Present!
Imagine you are running a campaign for the local community to raise awareness about your chosen river property and the health of the river. Use the information in your worksheet to create a poster or digital Photo Story for your campaign.



Supported by
Government
of South Australia



Suggested Resources

Flows and Floods

<https://www.environment.sa.gov.au/topics/river-murray-flows>

<https://www.environment.sa.gov.au/topics/flood/learn-about-flooding>

Water Temperature

<https://ozcoasts.org.au/indicators/biophysical-indicators/temperature/>

<https://wetlandinfo.des.qld.gov.au/wetlands/ecology/components/water-physical/temperature/>

Salinity

<https://www.mdba.gov.au/climate-and-river-health/water-quality/salinity>

<https://www.mdba.gov.au/climate-and-river-health/water-quality/salinity/impact-salinity>

Water Quality Threats

<https://www.mdba.gov.au/climate-and-river-health/water-quality-threats>

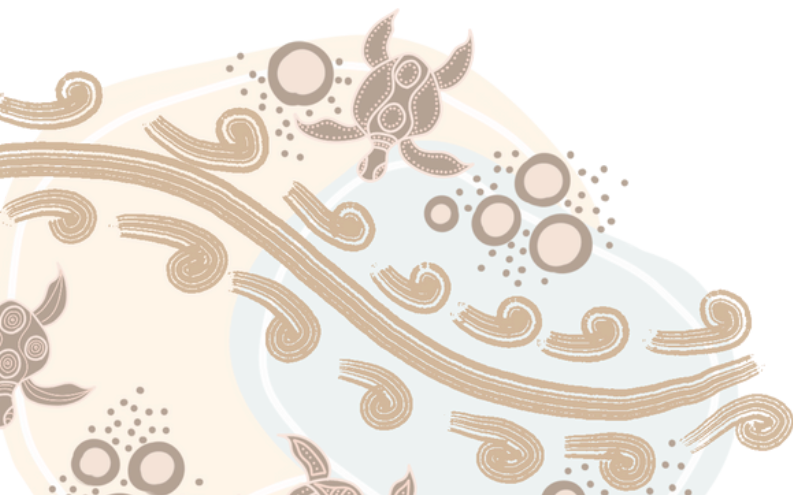
Impact of River Changes on First Nations People

<https://www.mdba.gov.au/publications-and-data/school-resources/lesson-packages/caring-river-country>

<https://culturalflows.com.au/about/aboriginal-people-and-water>

Impact of Climate Change on Rivers and Wetlands

<https://www.climatechange.environment.nsw.gov.au/impacts-climate-change/natural-environment/rivers-and-wetlands>



Supported by
Government
of South Australia



Geographical Inquiry into the River Murray



Group members			
Chosen site		State	
Chosen river property			
Possible questions			
Question for geographical inquiry			
Answer			



Supported by
Government
of South Australia





Chosen Task	
Answer	
Chosen Task	
Answer	